

POWER MONITORING & PROTECTION

MOTORS AVER™ THREE-PHASE VOLTAGE MONITOR 455 SERIES

DESCRIPTION

The **Model 455** three-phase voltage monitor combines load and line-side monitoring to alert the user of contact failure or impending contact failure. The line-side monitoring will protect the motor from damaging line-side conditions prior to the motor starting. With the **Model 455**, your motor is fully protected at all times. The motor will not start if a power problem is present.

The monitor is equipped with an infrared LED to communicate with the handheld diagnostic tool, the Informer-MS, to display MotorSaver® data to assist in monitoring and troubleshooting the system. Motor run hours, displayed by the Informer-MS can now be reset on the **Model 455**.

FEATURES

- The 455's universal range from 190-480VAC 50/60 Hz provides the versatility needed to handle global applications.
- Four adjustment pots provide versatility for a variety of applications.
- Load and line-side monitoring provides contactor protection.
- Diagnostic LEDs indicate trip status and provide simple troubleshooting.
- Microcontroller-based circuitry for better accuracy and higher reliability.



Model 455



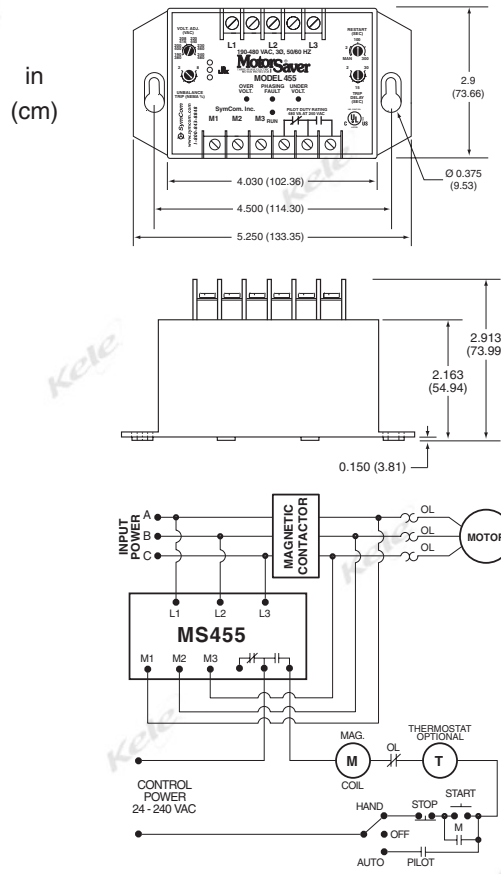
- Single-phase conditions are detected regardless of regenerated voltages.
- Transient protection meets IEEE and IEC standards and permits operation under tough conditions.

SPECIFICATIONS

Supply Watts	6W maximum
Frequency	50*/60 Hz
Contact Rating	SPDT 480 VA @ 240 VAC pilot duty 10A general purpose SPDT high voltage relay (-480R) 470 VA @ 600 VAC pilot duty
Transient Protection Line Voltage Monitored	IEC 1000-4-5; 1995 ± 6K1
455	190 - 480 VAC
455 - 480R	380 - 480 VAC
455 - 575	475 - 600 VAC
Low Voltage Trip	90% of setpoint (±1%)
Low Voltage Reset	93% of setpoint (±1%)
Reset Delay Time after Fault	Manual or 2-300 seconds
Reset Delay Time after Power Loss	Manual or 2-300 seconds
Trip Delay Time High Voltage	2-30 seconds, adjustable
Trip Delay Time Low Voltage	2-30 seconds, adjustable
Trip Delay Time Phase Fault	0.5 seconds
Trip Delay Time Time Unbalance	2-30 seconds, adjustable
Voltage Unbalance Reset	Trip setting minus 1%
Voltage Unbalance Trip	2% to 8%, adjustable
Dimensions	2.9"H x 5.25"W x 2.9"D (7.4 x 13.3 x 7.4 cm)
Weight	0.88 lb (0.396 kg)
Approvals	UL and cUL listed, #E68520, CS1, C1
Warranty	5 years

* 50 Hz will increase all delay times by 20%.

WIRING



ORDERING INFORMATION

MODEL
455
455-480R
455-575
INFORMER-MS

DESCRIPTION
Three-phase voltage monitor, 190-480 VAC
Three-phase voltage monitor, 380-480 VAC
Three-phase voltage monitor, 575-600 VAC
Hand held diagnostic/trouble shooting tool